



Royal Satin

# Satin

*The lustrous Satin will always be the cloth that you turn to for sophistication and class for formal affairs. Each color is rich and saturated with color.*

*Sizes: 54x54 square, 90x90 square  
96 round, 120 round, 132 round,  
90x156*

*Napkins, chair sash, 14x108 runner*



Butterscotch



Cashmere



Gold



Ivory



White



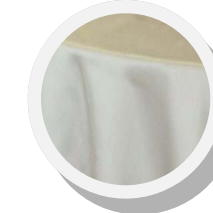
Ice Pink



Mint



Sage



Silver



Baja Turquoise



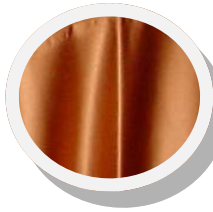
Tiffany Blue



Royal



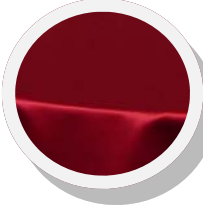
Fuschia



Copper



Red



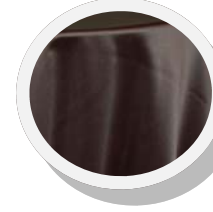
Garnet



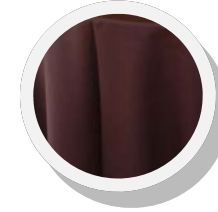
Baja Violet



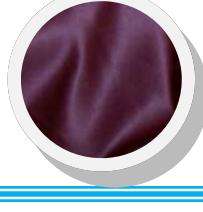
Pumpkin



Black



Chocolate



Eggplant